



Service-Brochure 2020

## Selective Structural



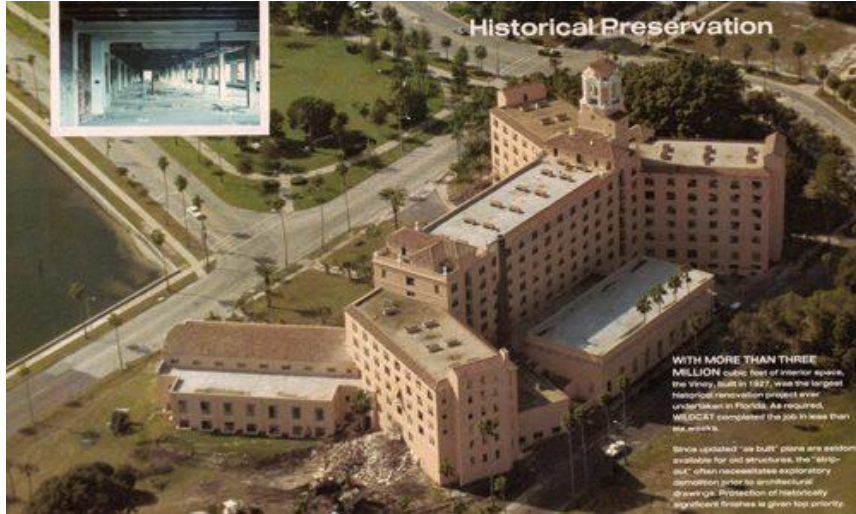
Structural improvements & modifications are relatively expensive design variables; therefore, owners incorporate the existing structural members whenever possible. The challenge is to “surgically” remove the necessary structural components without compromising the safety of the workers or the structure’s integrity.

## Total Demolition



Wildcat owns, operates and maintains a fleet of specialty equipment which insures that we have the right equipment in place to TACKLE THE TOUGH ONES and bring the bring them in on schedule.

## Renovation



The nature of interior demolition prevents the effective use of heavy equipment conventionally used by demolition contractors... This factor mandates stringent supervision of labor crews to prevent damage and injury and efficient coordination with other trades to expedite tenant occupancy.

## Dismantling



The reverse of the constructing sequence. Often necessary due to extenuating circumstances such as other improvements, proximity of occupants; and/or structural integrity issues.